



SUBMITTAL DATA

1 1/4 x 1 1/2 x 7 HPCe300 & 1 1/2 x 2 x 7 HPCe300
3500 RPM CLOSE COUPLED
END SUCTION CENTRIFUGAL PUMPS

1 1/4 X 1 1/2 X 7 HPCe300

PUMP MODEL			MOTOR H.P.	MOTOR FRAME SIZE	PUMP WEIGHT	DIMENSIONS, INCHES															
DISC. SIZE	SUCT. SIZE	FULL IMP.				CP	A	B	D	E	F	J	L	AG	P	X	Y	Z	DD	AB	
1 1/4 X 1 1/2 X 7 HPCe300			5	182 JMV	138	18.84	10.50	7.50	6.88	4.25	5.50	2	7.13	10.59	1	6	3.44	4.75	4.88	4.75	
			7 1/2	184 JMV	153	19.84								11.59							
			10	213 JMV	185	21.31	13.06														
			15	215 JMV	207	22.81	12	10.25	6.25	5	8.25	3.25	4.44	14.56							

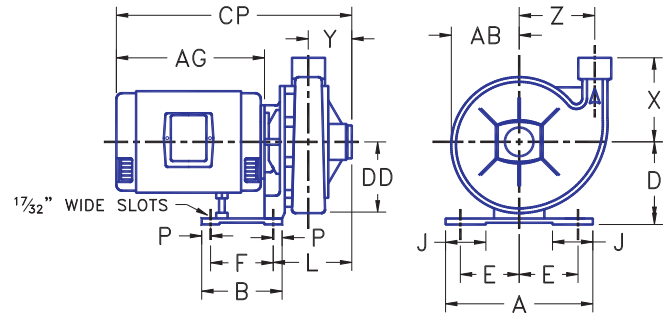
1 1/2 X 2 X 7 HPCe300

PUMP MODEL			MOTOR H.P.	MOTOR FRAME SIZE	PUMP WEIGHT	DIMENSIONS, INCHES															
DISC. SIZE	SUCT. SIZE	FULL IMP.				CP	A	B	D	E	F	J	L	AG	P	X	Y	Z	DD	AB	
1 1/2 X 2 X 7 HPCe300			5	182 JMV	138	18.84	10.50	7.50	6.88	4.25	5.50	2	7.13	10.59	1	6	3.44	4.75	4.88	4.75	
			7 1/2	184 JMV	153	19.84								11.59							
			10	213 JMV	185	21.31	13.06														
			15	215 JMV	207	22.81	12	10.25	6.25	5	8.25	3.25	4.44	14.56							

ALL MODELS

MATERIALS OF CONSTRUCTION

DESCRIPTION	STANDARD BRONZE FITTED CONSTRUCTION	OPTIONS
CASING	CAST IRON	
CASING WEAR RINGS		BRONZE
IMPELLER	BRONZE	
MOTOR SHAFT	STEEL	
SHAFT SLEEVE	BRASS	316 S.S.
BRACKET	CAST IRON	
LUBRICATION	GREASE	
MECHANICAL SEAL	NI-RESIST	SILICON CARBIDE TUNGSTEN CARBIDE CERAMIC
CASING CONNECTIONS	NPTF	
SEAL FLUSH	INTERNAL	EXTERNAL BY-PASS



MAXIMUM OPERATING CONDITIONS

	NI-RESIST (STANDARD) CERAMIC	SILICON CARBIDE TUNGSTEN CARBIDE
WORKING TEMPERATURE	250°F	300°F
WORKING PRESSURE	175 PSI	175 PSI

Job Name _____

Location _____

Engineer _____

Architect _____

Sales Rep. _____

Contractor _____

Model Number _____

Temperature _____

Capacity _____ GPM Head: _____ Ft.

Liquid _____ RPM _____

H.P. _____ B.H.P. _____

Volts _____

Enclosure _____



SUBMITTAL DATA

2 x 2 1/2 x 7 HPCe300 & 2 1/2 x 3 x 7 HPCe300
3500 RPM CLOSE COUPLED
END SUCTION CENTRIFUGAL PUMPS

2 X 2 1/2 X 7 HPCe300

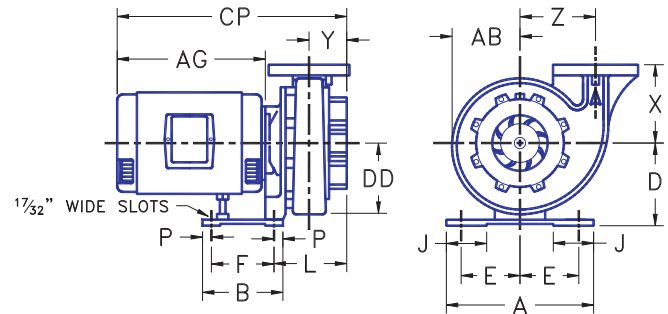
PUMP MODEL			MOTOR H.P.	MOTOR FRAME SIZE	PUMP WEIGHT	DIMENSIONS, INCHES														
DISC. SIZE	SUCT. SIZE	FULL IMP.																		
						CP	A	B	D	E	F	J	L	AG	P	X	Y	Z	DD	AB
2 X 2 1/2 X 7 HPCe300			10	213 JMV	195	20.25	10.50	7.50	6.88	4.25	5.50	2	6.63	13.06	1	6.13	2.91	4.75	4.88	5.44
			15	215 JMV	217	21.19	12	10.25	6.25	5	8.25	3.25	11.81	14.56						

2 1/2 X 3 X 7 HPCe300

PUMP MODEL			MOTOR H.P.	MOTOR FRAME SIZE	PUMP WEIGHT	DIMENSIONS, INCHES														
DISC. SIZE	SUCT. SIZE	FULL IMP.																		
						CP	A	B	D	E	F	J	L	AG	P	X	Y	Z	DD	AB
2 1/2 X 3 X 7 HPCe300			10	213 JMV	215	20.25	10.50	7.50	6.88	4.25	5.50	2	7.81	13.06	1	6.22	3.09	5	5.44	5.75
			15	215 JMV	237	21.19	12	10.25	6.25	5	8.25	3.25	4.44	14.56						

ALL MODELS
MATERIALS OF CONSTRUCTION

DESCRIPTION	STANDARD BRONZE FITTED CONSTRUCTION	OPTIONS
CASING	CAST IRON	
CASING WEAR RINGS		BRONZE
IMPELLER	BRONZE	
MOTOR SHAFT	STEEL	
SHAFT SLEEVE	BRASS	316 S.S.
BRACKET	CAST IRON	
LUBRICATION	GREASE	
MECHANICAL SEAL	NI-RESIST	SILICON CARBIDE TUNGSTEN CARBIDE CERAMIC
CASING CONNECTIONS	125 ASA DRILLING	
SEAL FLUSH	INTERNAL	EXTERNAL BY-PASS



MAXIMUM OPERATING CONDITIONS

	NI-RESIST (STANDARD) CERAMIC	SILICON CARBIDE TUNGSTEN CARBIDE
WORKING TEMPERATURE	250°F	300°F
WORKING PRESSURE	175 PSI	175 PSI

Job Name _____
 Location _____

 Engineer _____
 Architect _____
 Sales Rep. _____
 Contractor _____

Model Number _____
 Temperature _____
 Capacity _____ GPM Head: _____ Ft.
 Liquid _____ RPM _____
 H.P. _____ B.H.P. _____
 Volts _____
 Enclosure _____



SUBMITTAL DATA

1 1/4 x 1 1/2 x 9 HPCe300 & 1 1/2 x 2 x 9 HPCe300
3500 RPM CLOSE COUPLED
END SUCTION CENTRIFUGAL PUMPS

1 1/4 X 1 1/2 X 9 HPCe300

PUMP MODEL			MOTOR H.P.	MOTOR FRAME SIZE	PUMP WEIGHT	DIMENSIONS, INCHES														
DISC. SIZE	SUCT. SIZE	FULL IMP.				CP	A	B	D	E	F	J	L	AG	P	X	Y	Z	DD	AB
1 1/4 X 1 1/2 X 9 HPCe300			7 1/2	184 JMV	201	20.09	10.50	7.50	6.88	4.25	5.50	2	9.19	11.59	1	6.75	3.27	5.69	6	5.63
			10	213 JMV	223	21.56								13.06						
			15	215 JMV	291	22.06	12	10.25	6.25	5	8.25	3.25	16.38	14.56						

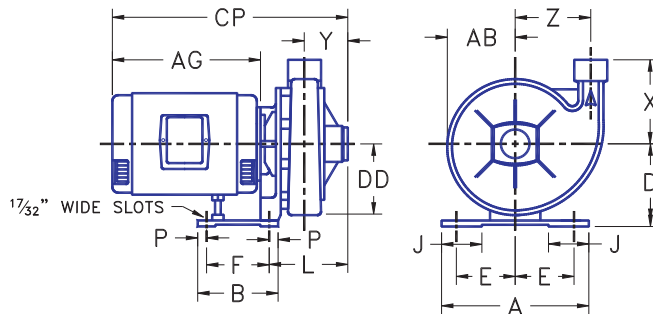
1 1/2 X 2 X 9 HPCe300

PUMP MODEL			MOTOR H.P.	MOTOR FRAME SIZE	PUMP WEIGHT	DIMENSIONS, INCHES														
DISC. SIZE	SUCT. SIZE	FULL IMP.				CP	A	B	D	E	F	J	L	AG	P	X	Y	Z	DD	AB
1 1/2 X 2 X 9 HPCe300			7 1/2	184 JMV	201	20.09	10.50	7.50	6.88	4.25	5.50	2	9.19	11.59	1	6.75	3.27	5.69	6	5.63
			10	213 JMV	223	21.56								13.06						
			15	215 JMV	291	22.06	12	10.25	6.25	5	8.25	3.25	16.38	14.56						

ALL MODELS

MATERIALS OF CONSTRUCTION

DESCRIPTION	STANDARD BRONZE FITTED CONSTRUCTION	OPTIONS
CASING	CAST IRON	
CASING WEAR RINGS		BRONZE
IMPELLER	BRONZE	
MOTOR SHAFT	STEEL	
SHAFT SLEEVE	BRASS	316 S.S.
BRACKET	CAST IRON	
LUBRICATION	GREASE	
MECHANICAL SEAL	NI-RESIST	SILICON CARBIDE TUNGSTEN CARBIDE CERAMIC
CASING CONNECTIONS	NPTF	
SEAL FLUSH	INTERNAL	EXTERNAL BY-PASS



MAXIMUM OPERATING CONDITIONS

	NI-RESIST (STANDARD) CERAMIC	SILICON CARBIDE TUNGSTEN CARBIDE
WORKING TEMPERATURE	250°F	300°F
WORKING PRESSURE	175 PSI	175 PSI

Job Name _____

Location _____

Engineer _____

Architect _____

Sales Rep. _____

Contractor _____

Model Number _____

Temperature _____

Capacity _____ GPM Head: _____ Ft.

Liquid _____ RPM _____

H.P. _____ B.H.P. _____

Volts _____

Enclosure _____